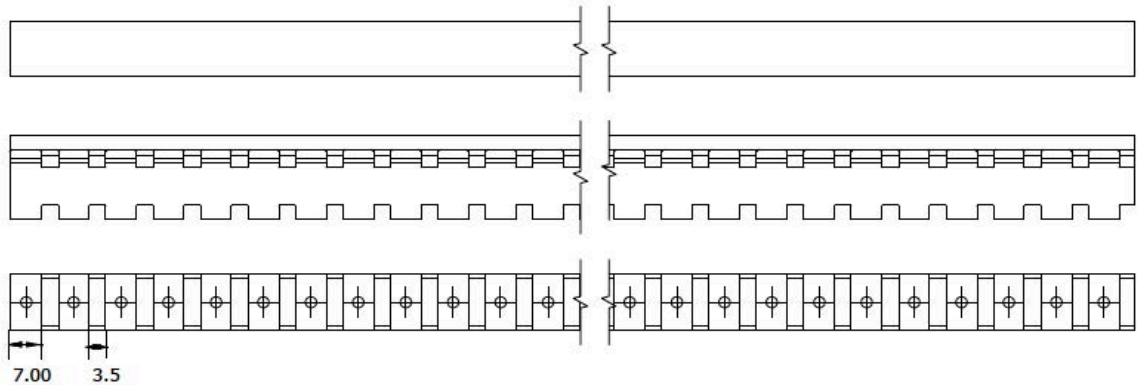
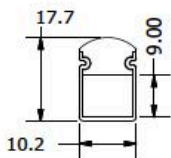


Light Surface



Technical Specification

The revolutionary Profile system is a flexible solution addressing all the limitations of conventional aluminum profile fixtures. This flexible and linear Profile will provide protection and diffusion for the SMD LED Chips. This extraordinary three-part design allows the LED strip and Profile to be fitted in smaller sections before installing the continuous diffused cover. This uniquely designed Profile system will provide the illusion of a continuous light installation.

Our extensive range of Profiles will take your installation to a different dimension. With maximum variations, there is a profile to suit any application. Our profiles use high grade aluminum to facilitate heat dissipation. They further protect and extend the life of your LED Flex. Most of our Profiles come with cover options to diffuse or focus light to your desired output.

