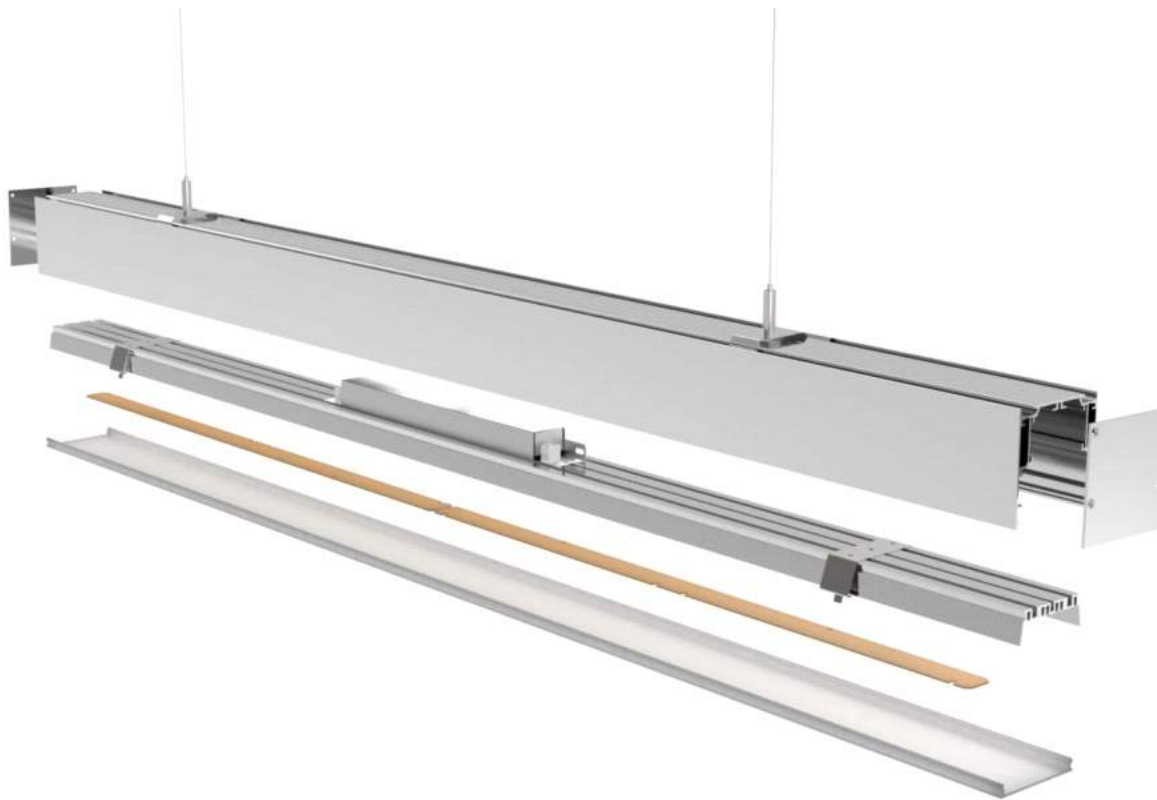




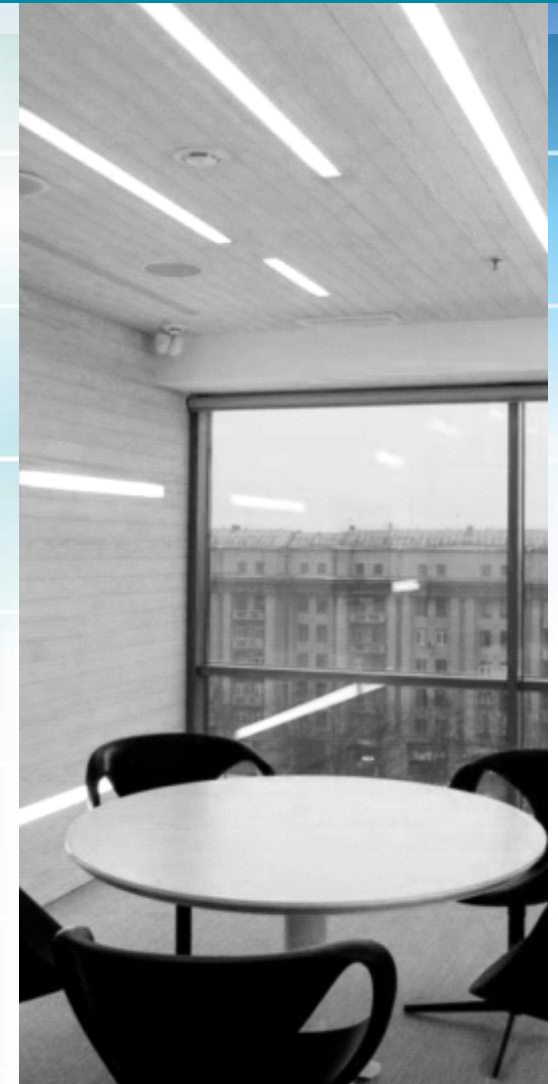
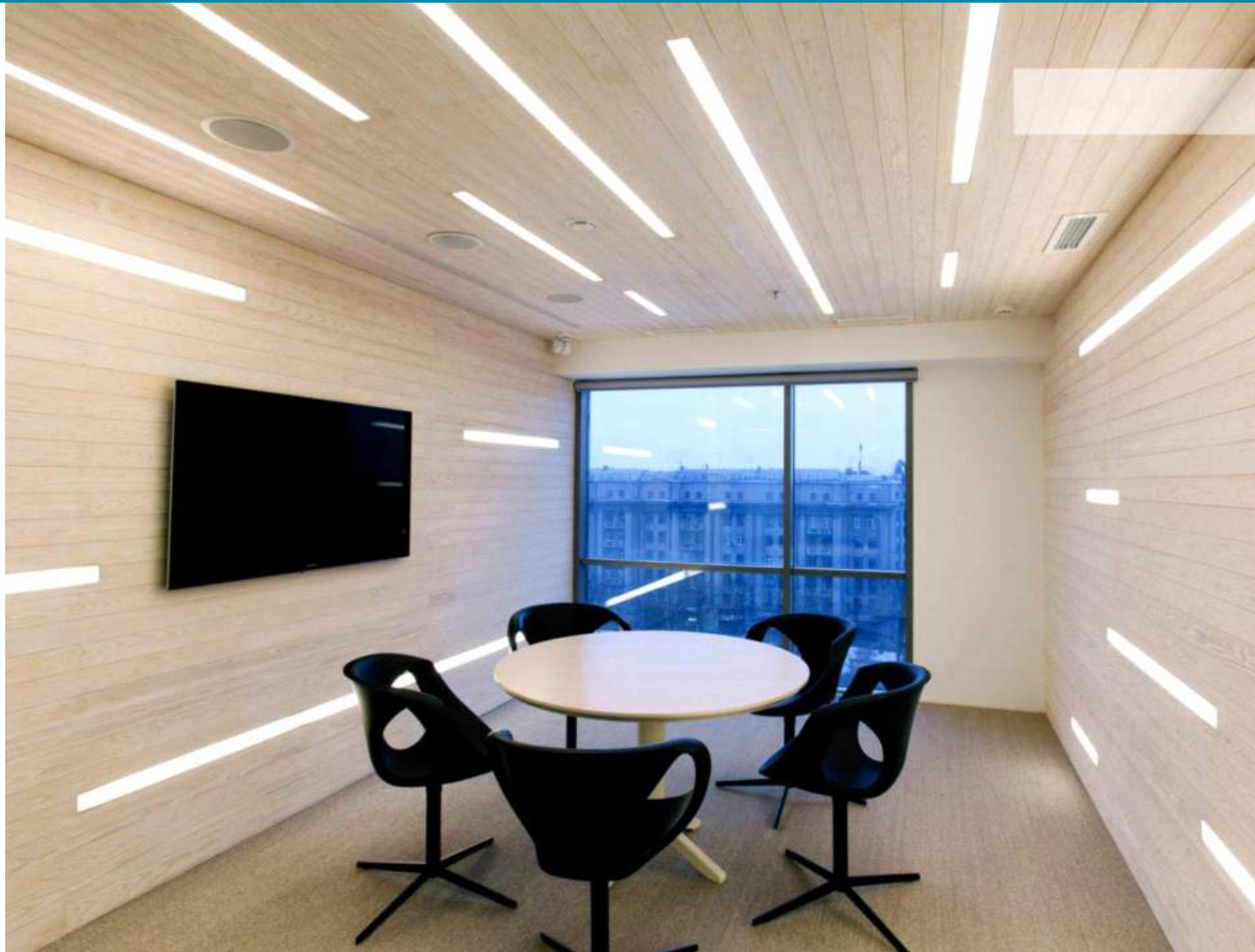
lumeplus

Aluminum LED Profile

Platinum aluminum profiles and accessories designed for special attention focused on Linear LED lighting Dynamics. Lumeplus products are innovative having unique features, very flexible always closely work with its customers for any modifications and specific requirements. LED strips are designed for high luminance efficiency based on micro chip LED's tested and thermally optimized (dedicated) for our profiles. Our products are designed based on the installation method you are looking for. The raw material used for the lenses, diffusers are UV-stabilized sourced from certified vendors.

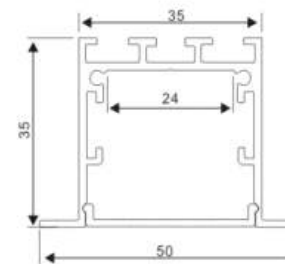
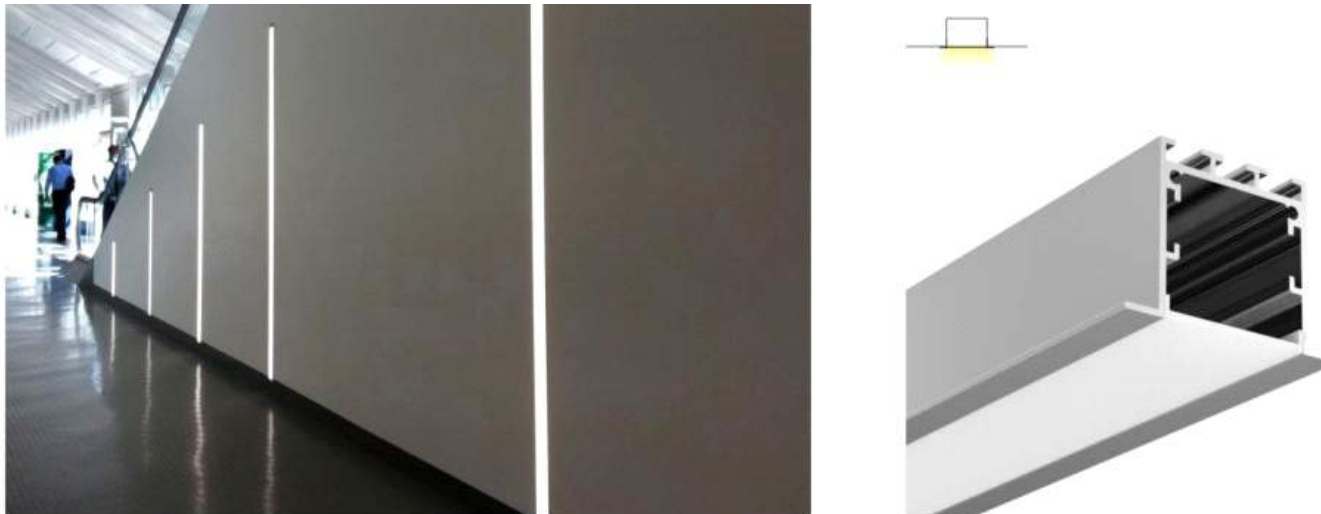


RECESSED



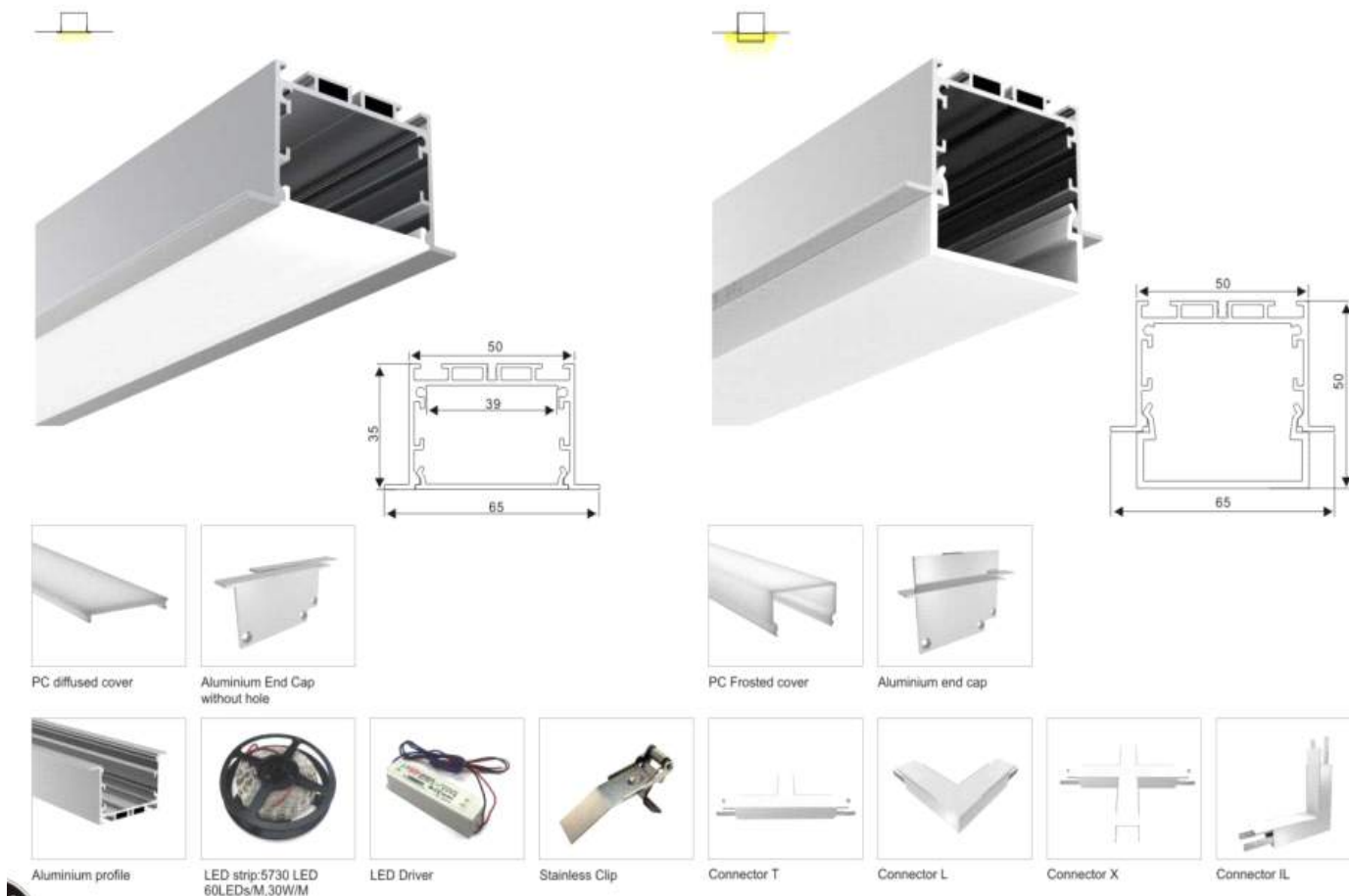
RECESS LED PROFILES

Alumimium LED profiles are designed for recess installation using remote (external)driver, according to the shape of the profile it must be mounted into a gypsum ceiling, gypsum walls or wooden partitions.



RECESS LED PROFILES

Alumimium LED profiles are designed for recess installation using remote (external)driver, according to the shape of the profile it must be mounted into a gypsum ceiling, gypsum walls or wooden partitions.



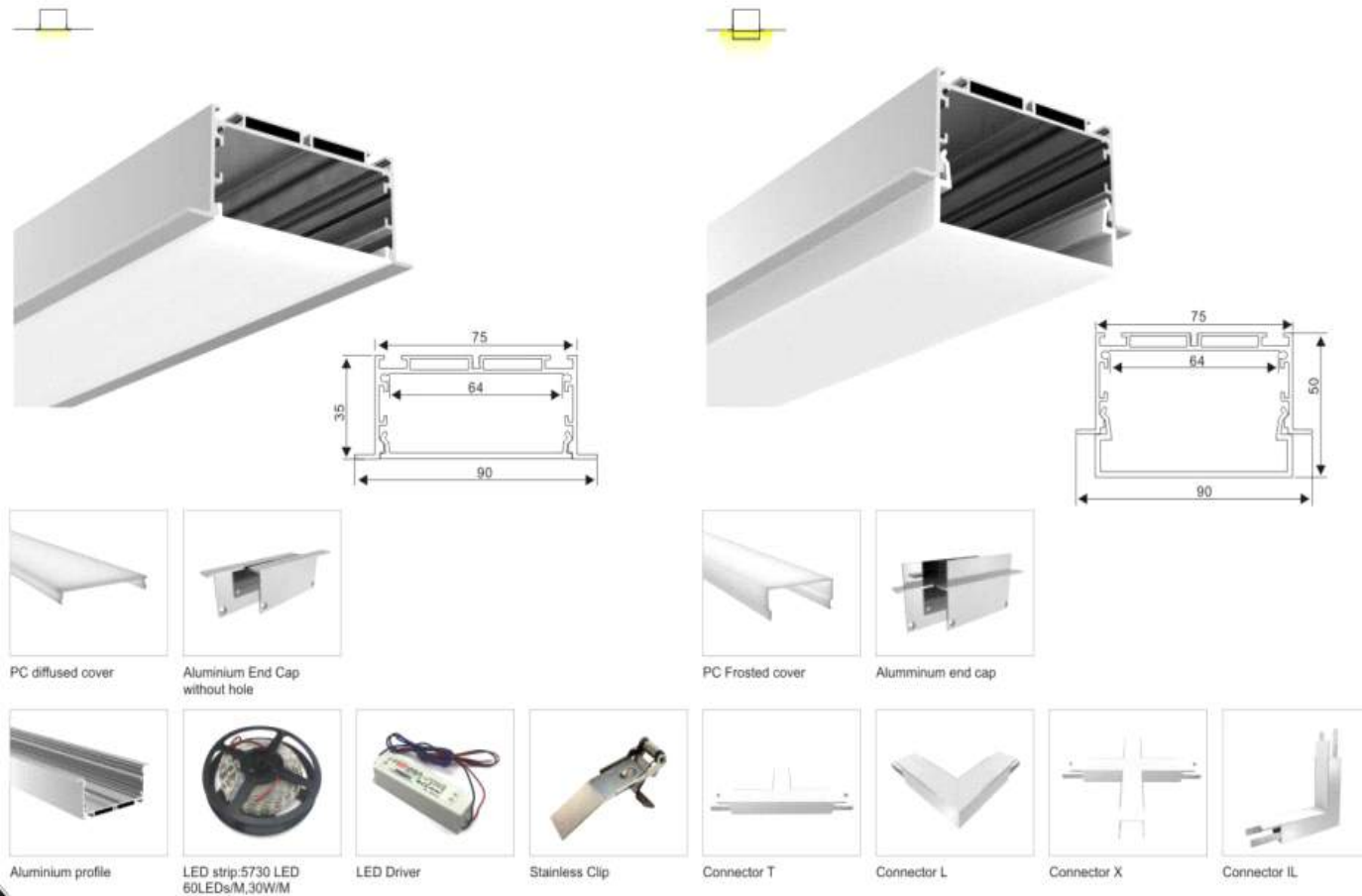
MODEL :LPRE65

MODEL :LPRE65A



RECESS LED PROFILES

Alumimium LED profiles are designed for recess installation using remote (external)driver, according to the shape of the profile it must be mounted into a gypsum ceiling, gypsum walls or wooden partitions.



MODEL :LPRE90

MODEL :LPRE90A

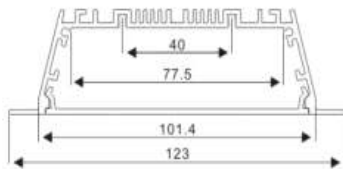


RECESS LED PROFILES

Alumimium LED profiles are designed for recess installation using remote (external)driver, according to the shape of the profile it must be mounted into a gypsum ceiling, gypsum walls or wooden partitions.



MODEL :LPRE123



Aluminium profile



PC Frosted cover



Aluminium End Cap without hole



LED Module:2835 LED 54W/1.2M



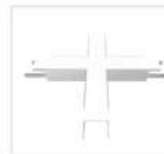
LED Driver



Connector T



Connector L



Connector X



Connector IL

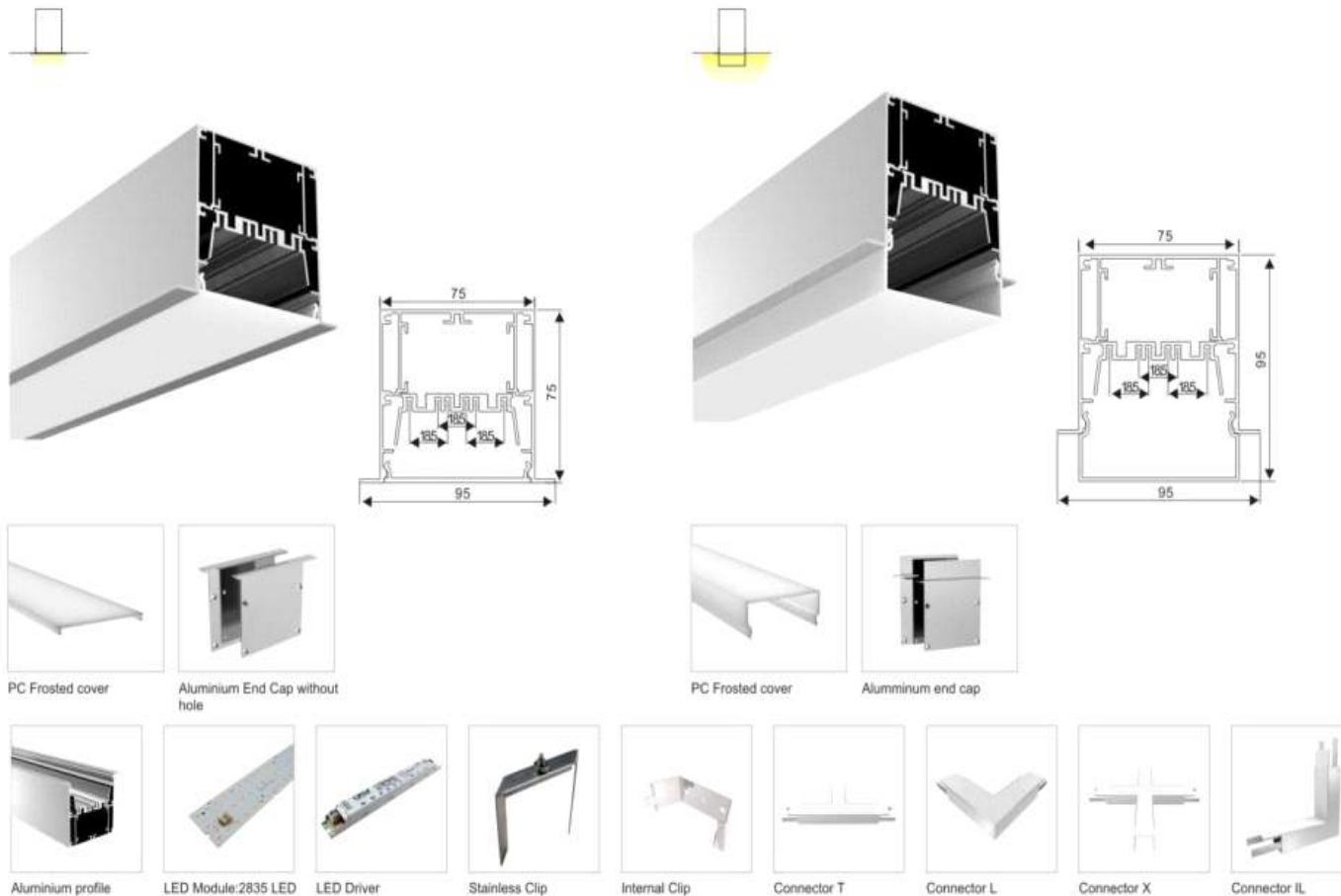


Stainless Clip



INTEGRATED RECESS LED PROFILES

This Aluminium LED profiles are designed for recess installation using integrated driver, according to the shape of the profile it must be mounted into a gypsum ceiling, gypsum walls or wooden partitions .



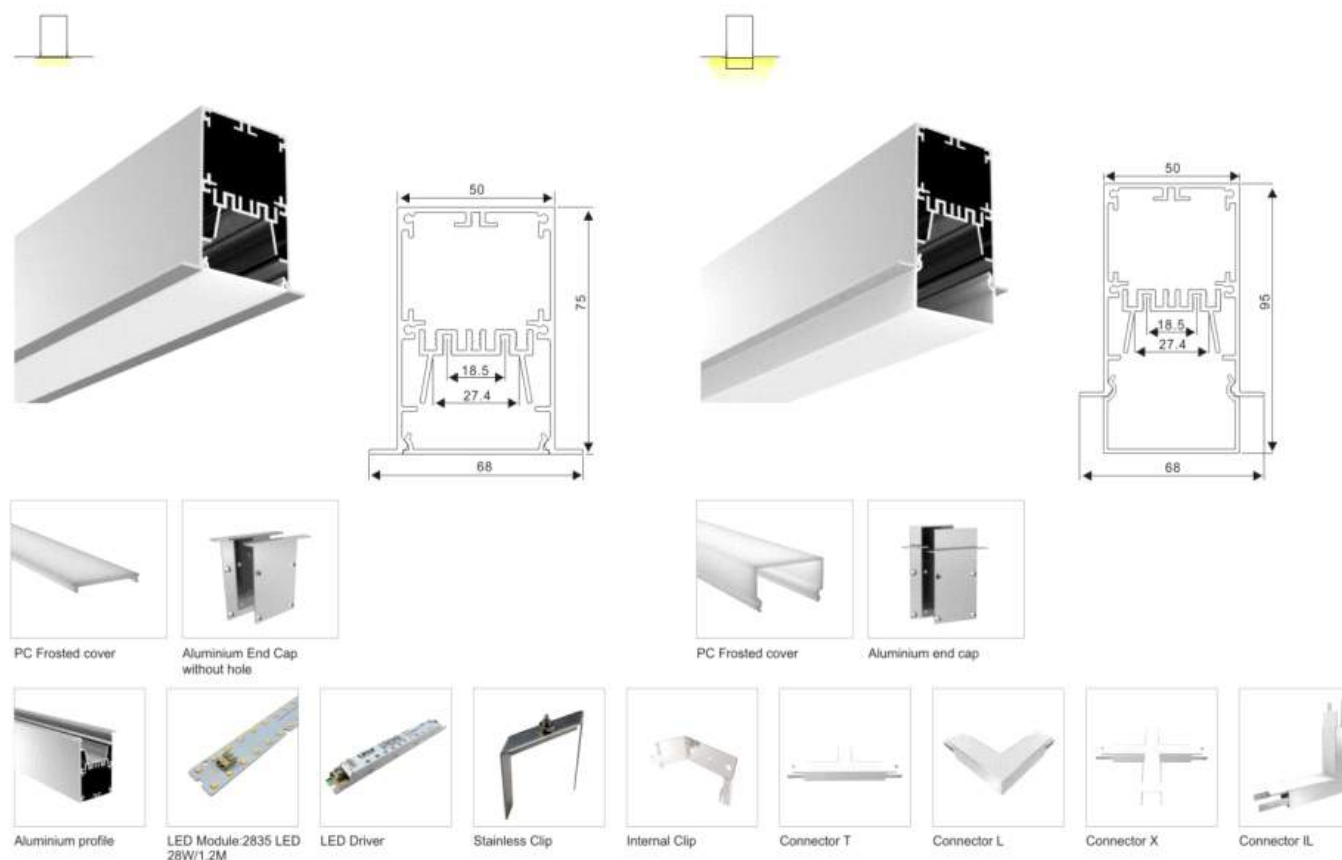
MODEL :LPREIT95

MODEL :LPREIT95A



INTEGRATED RECESS LED PROFILES

This Aluminium LED profiles are designed for recess installation using integrated driver, according to the shape of the profile it must be mounted into a gypsum ceiling, gypsum walls or wooden partitions .



MODEL :LPREIT68

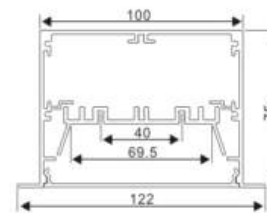
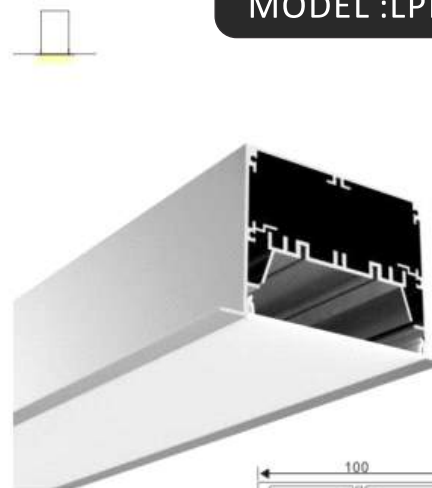
MODEL :LPREIT68A

INTEGRATED RECESS LED PROFILES

This Aluminium LED profiles are designed for recess installation using integrated driver, according to the shape of the profile it must be mounted into a gypsum ceiling, gypsum walls or wooden partitions .



MODEL :LPREIT122



Aluminium profile



PC Frosted cover



Aluminium End Cap without hole



LED Module:2835 LED 54W/1.2M



LED Driver



Connector T



Connector L



Connector X



Connector IL



Stainless Clip

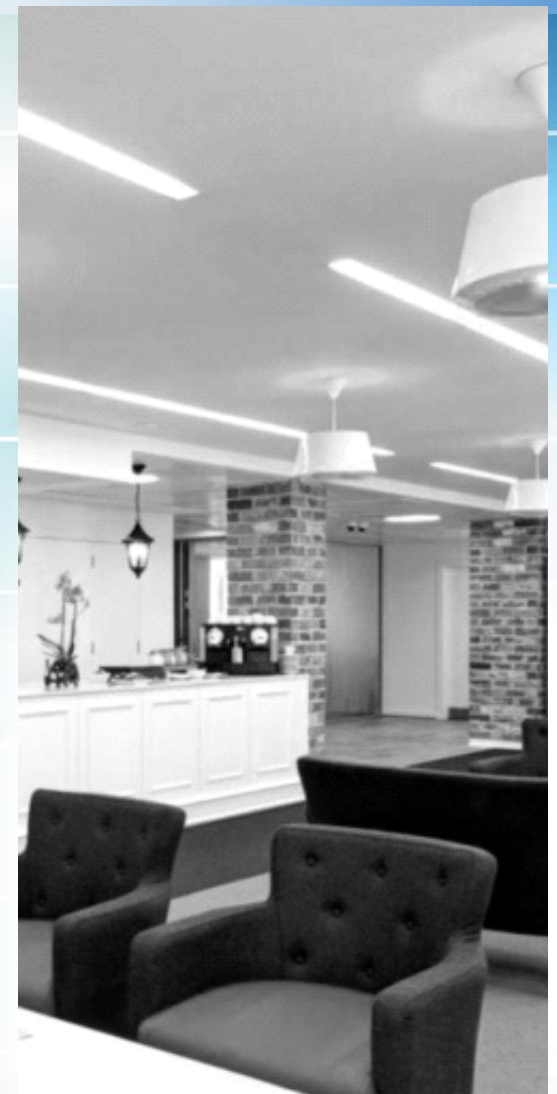


Internal Clip



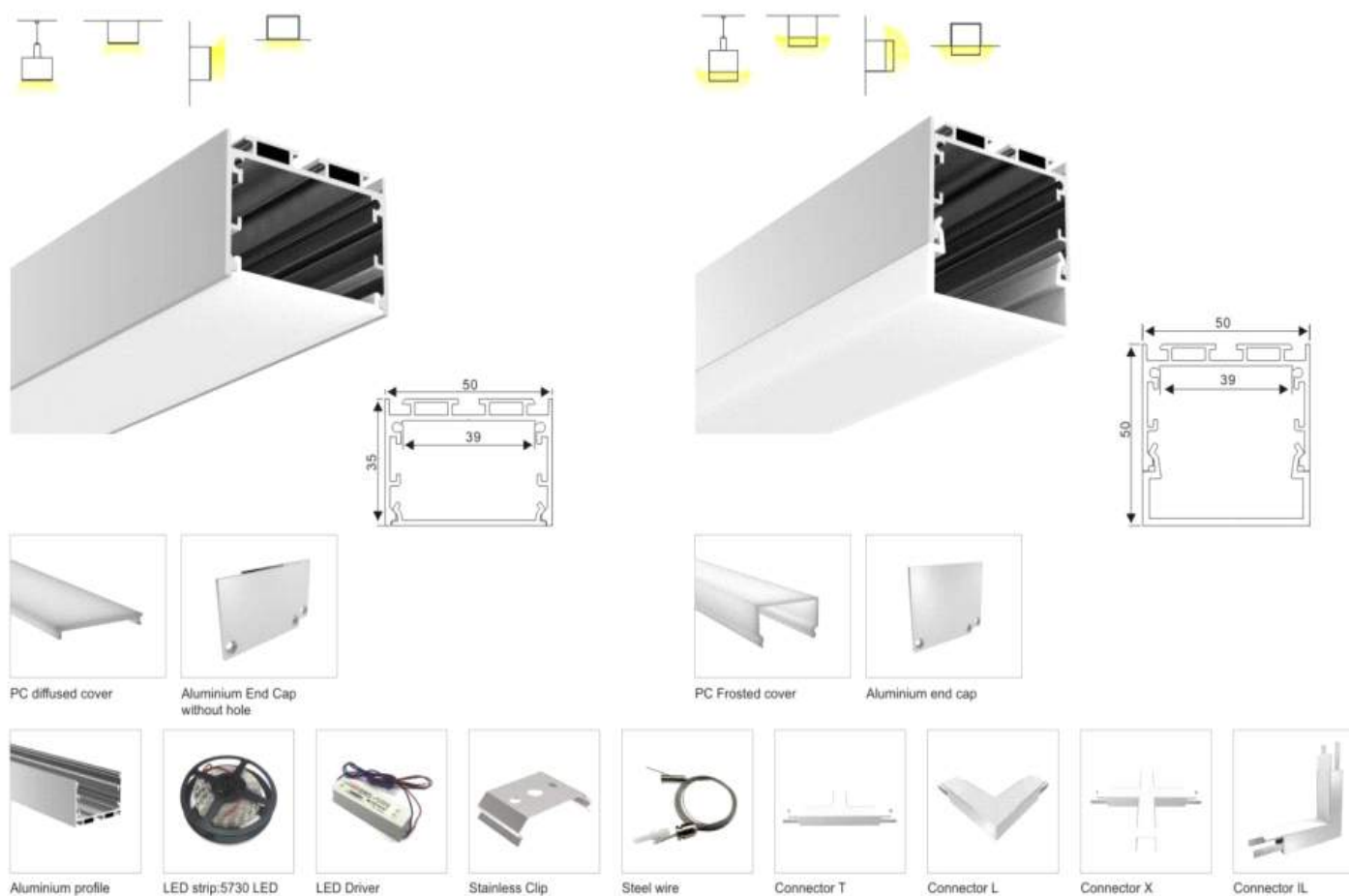
Steel wire





SUSPEND- SURFACE – WALL LED PROFILES

This aluminum LED profiles has been designed for Multi installation methods. According to the shape of the profile, some of them has been designed to be built into a gypsum ceiling, some to the floor, wall and others into the furniture, shelves or cabinets.

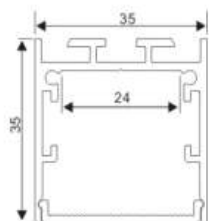
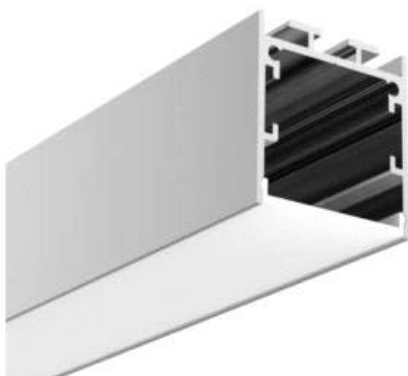


MODEL : LPMT50

MODEL : LPMT50A

SUSPEND- SURFACE – WALL LED PROFILES

This aluminum LED profiles has been designed for Multi installation methods. According to the shape of the profile, some of them has been designed to be built into a gypsum ceiling, some to the floor, wall and others into the furniture, shelves or cabinets.



Aluminium profile


PMMA opal matte cover
PMMA semi-clear cover
PC diffused cover

LED strip: 5730 LED
60LEDs/M, 30W/M


LED Driver



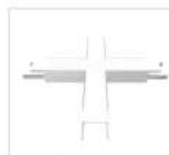
Steel wire



Connector T



Connector L



Connector X



Connector IL


Aluminium End Cap
without hole

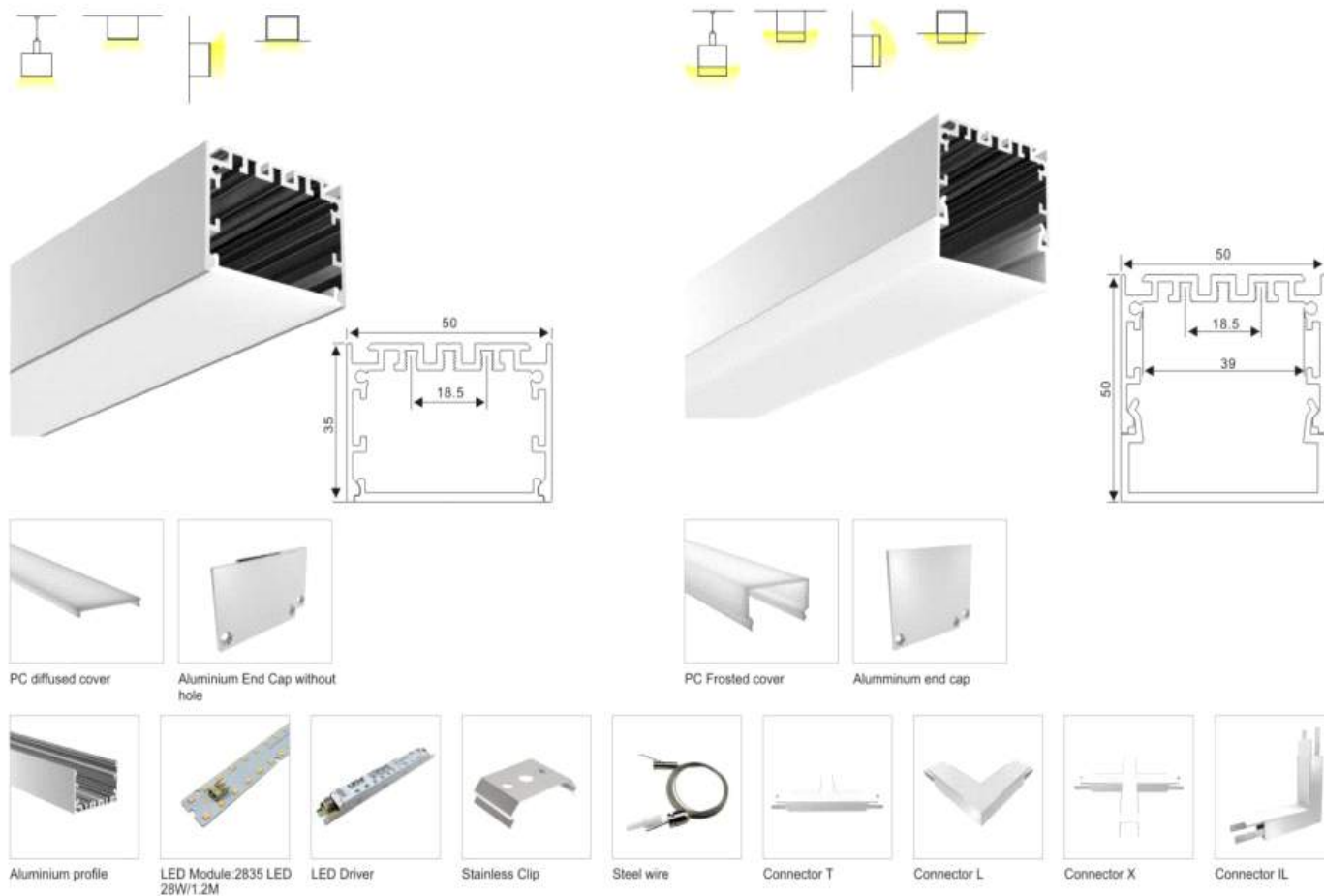

Stainless Clip

MODEL : LPMT35



SUSPEND- SURFACE – WALL LED PROFILES

This aluminum LED profiles has been designed for Multi installation methods. According to the shape of the profile, some of them has been designed to be built into a gypsum ceiling, some to the floor, wall and others into the furniture, shelves or cabinets.



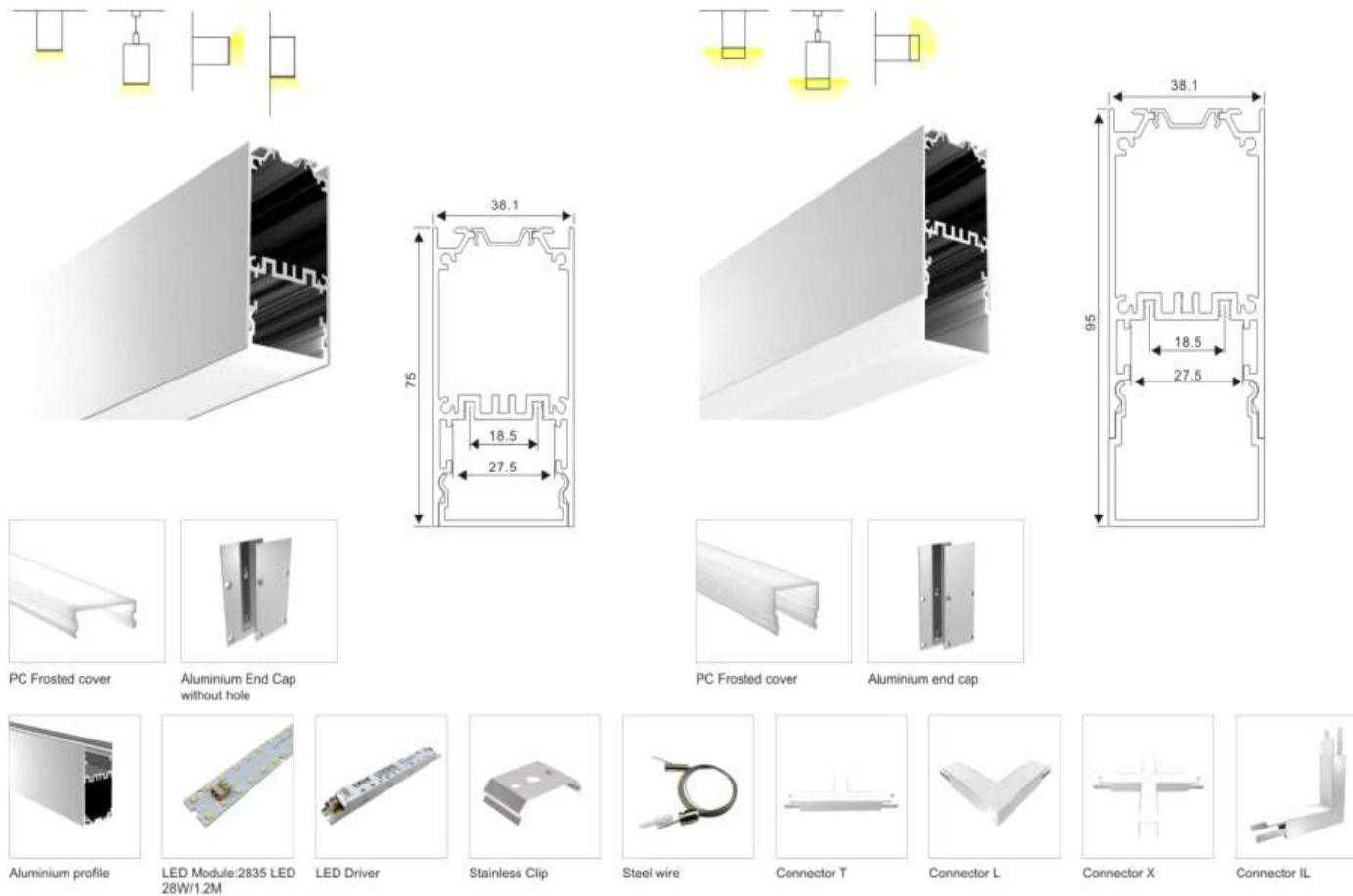
MODEL :LPMT50

MODEL :LPMT50



SUSPEND- SURFACE – WALL LED PROFILES

This aluminum LED profiles has been designed for Multi installation methods. According to the shape of the profile, some of them has been designed to be built into a gypsum ceiling, some to the floor, wall and others into the furniture, shelves or cabinets.



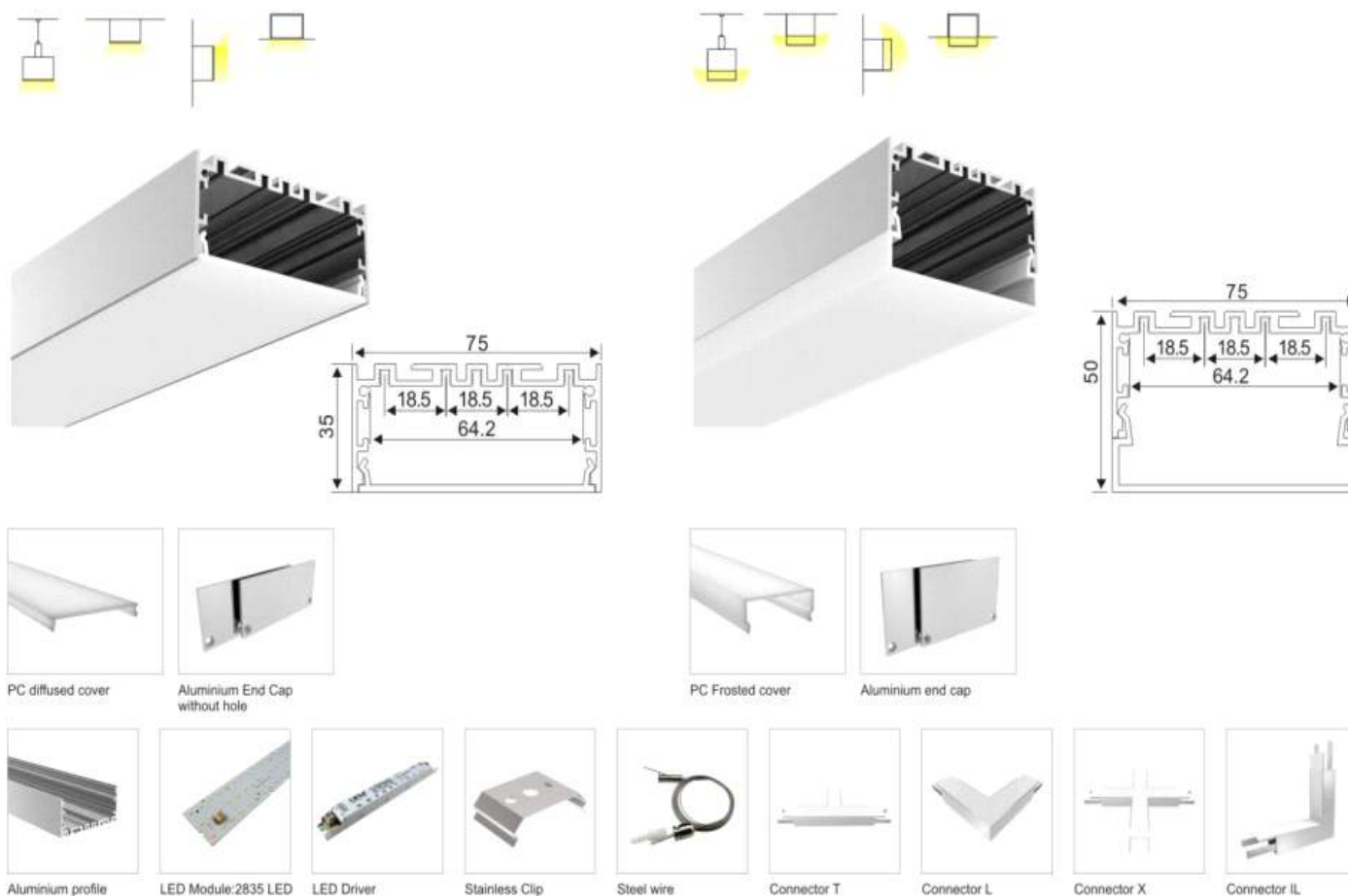
MODEL :LPMT381

MODEL :LPMT381A



SUSPEND- SURFACE – WALL LED PROFILES

This aluminum LED profiles has been designed for Multi installation methods. According to the shape of the profile, some of them has been designed to be built into a gypsum ceiling, some to the floor, wall and others into the furniture, shelves or cabinets.



MODEL :LPMT75

MODEL :LPMT75A

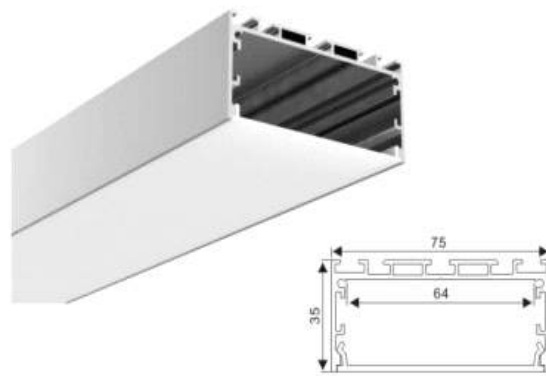






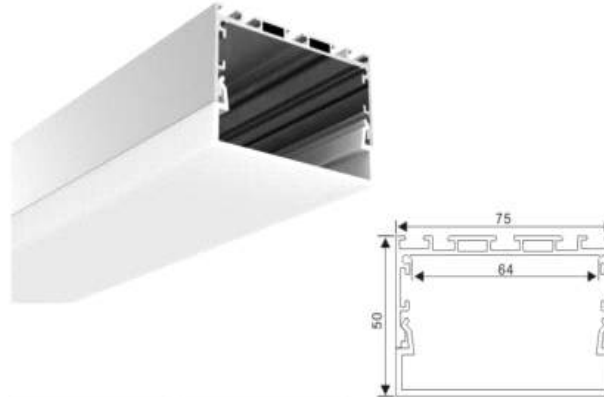
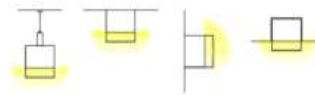


SUSPEND- SURFACE – WALL LED PROFILES



PC diffused cover

Aluminium End Cap without hole



PC Frosted cover

Aluminium end cap



Aluminium profile



LED strip: 5730 LED 60LEDs/M, 30W/M



LED Driver



Stainless Clip



Steel wire



Connector T



Connector L



Connector X



Connector IL

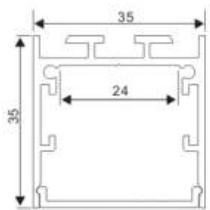
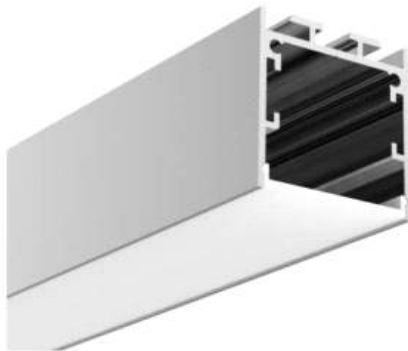
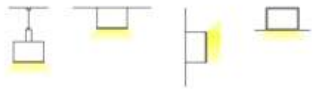
MODEL : LPMT75

MODEL : LPMT75A



SUSPEND- SURFACE – WALL LED PROFILES

MODEL :LPMT35



Aluminium profile



PMMA opal matte cover
PMMA semi-clear cover
PC diffused cover



LED strip:5730 LED
60LEDs/M,30W/M



LED Driver



Steel wire



Connector T



Connector L



Connector X



Connector IL



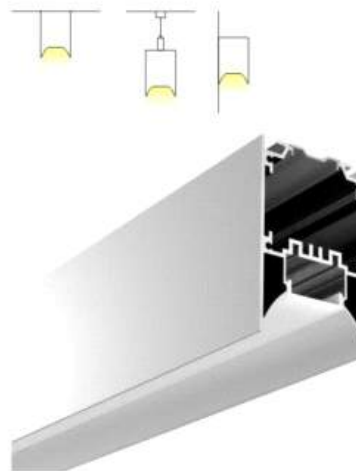
Aluminium End Cap
without hole



Stainless Clip

INTEGRATED SUSPEND- SURFACE – WALL LED PROFILES

This group of aluminum LED profiles has been designed for Pendant /Suspend or Surface mount installation with integrated LED driver.



Aluminium profile



PMMA opal matte cover
PMMA semi-clear cover
PC diffused cover



Aluminium End Cap
without hole



Stainless Clip



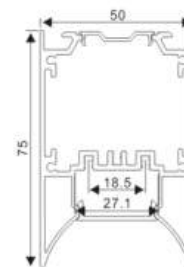
LED Module:2835 LED
28W/1.2M



LED Driver



Steel wire

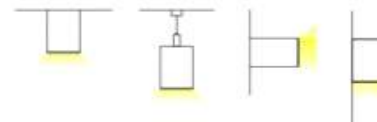
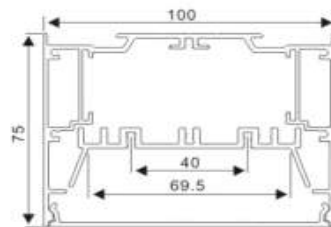
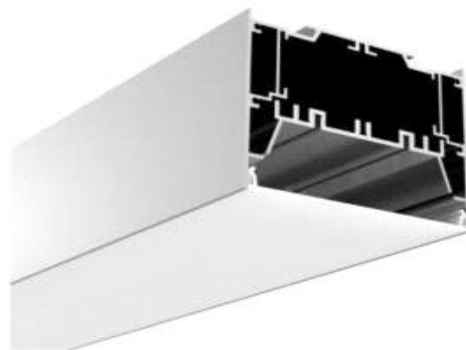


MODEL :LPIMT50



INTEGRATED SUSPEND- SURFACE – WALL LED PROFILES

This group of aluminum LED profiles has been designed for Pendant /Suspend or Surface mount installation with integrated LED driver.



Connector T



Connector L



Connector X



Connector IL



Internal Clip



Stainless Clip



Aluminium profile



PC Frosted cover


Aluminium End Cap
without hole

LED Module:2835 LED
54W/1.2M


LED Driver

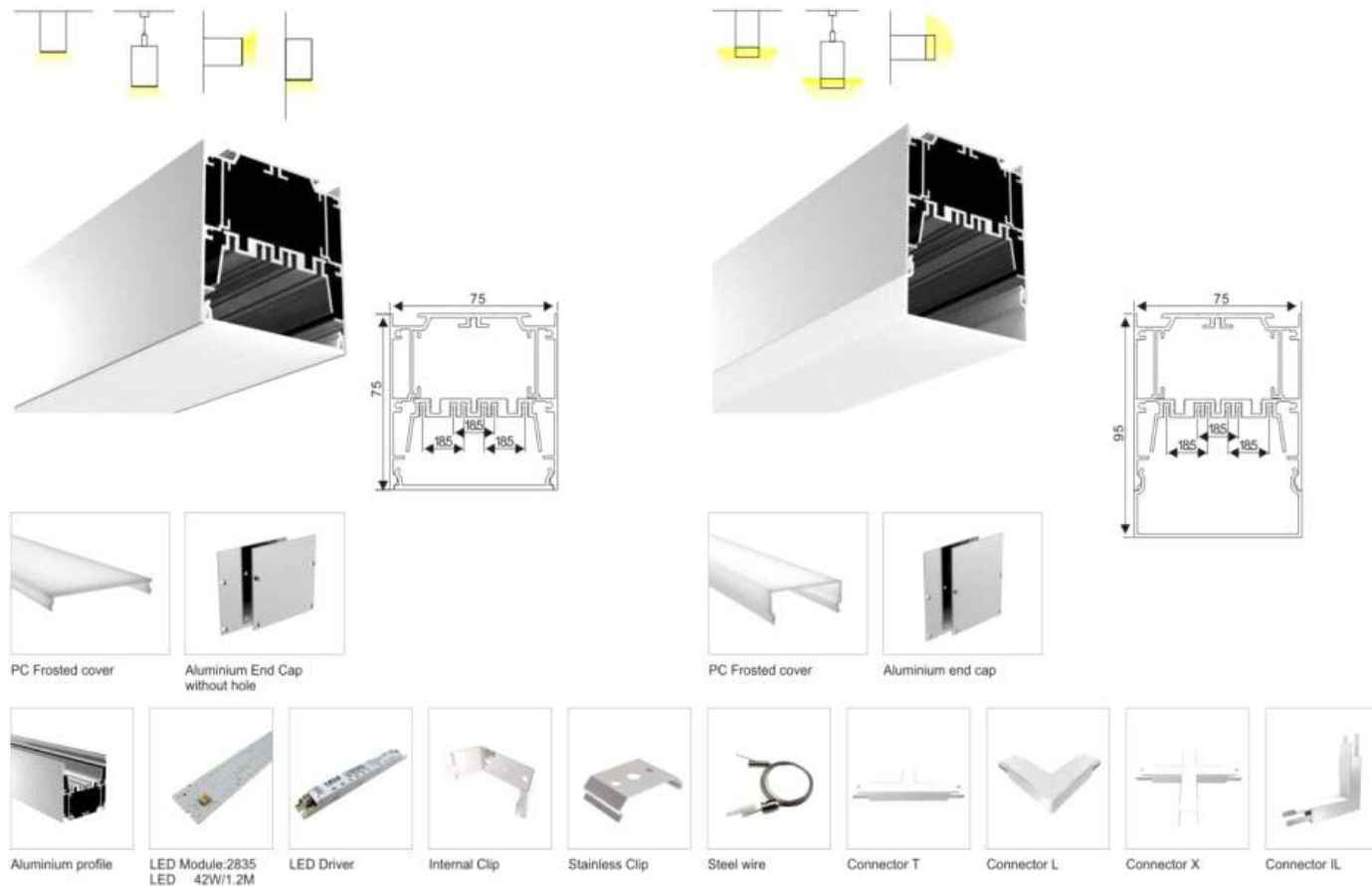


Steel wire



INTEGRATED SUSPEND- SURFACE – WALL LED PROFILES

This group of aluminum LED profiles has been designed for Pendant /Suspend or Surface mount installation with integrated LED driver.



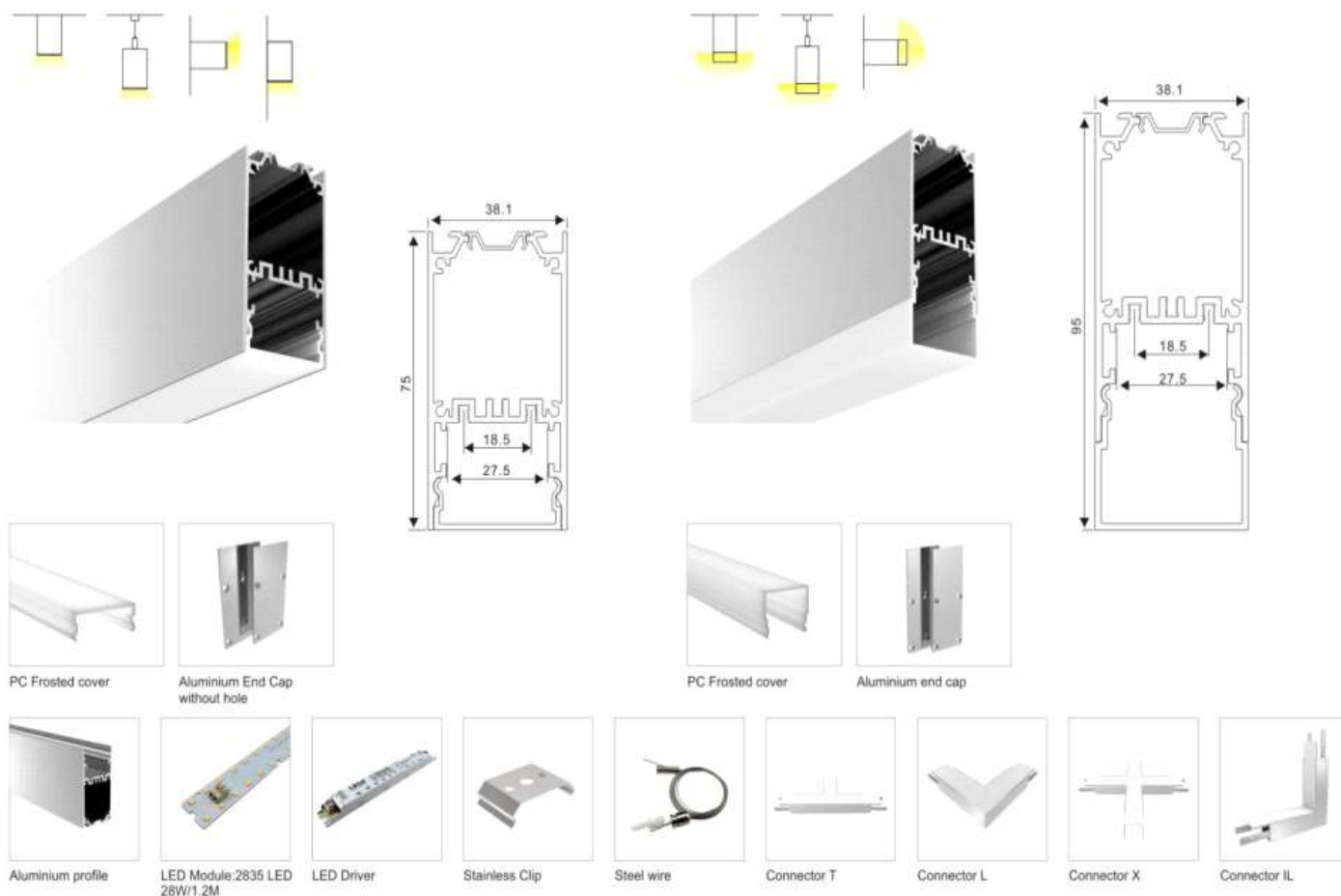
MODEL :LPIMT75

MODEL :LPIMT75A



INTEGRATED SUSPEND- SURFACE – WALL LED PROFILES

This group of aluminum LED profiles has been designed for Pendant /Suspend or Surface mount installation with integrated LED driver.

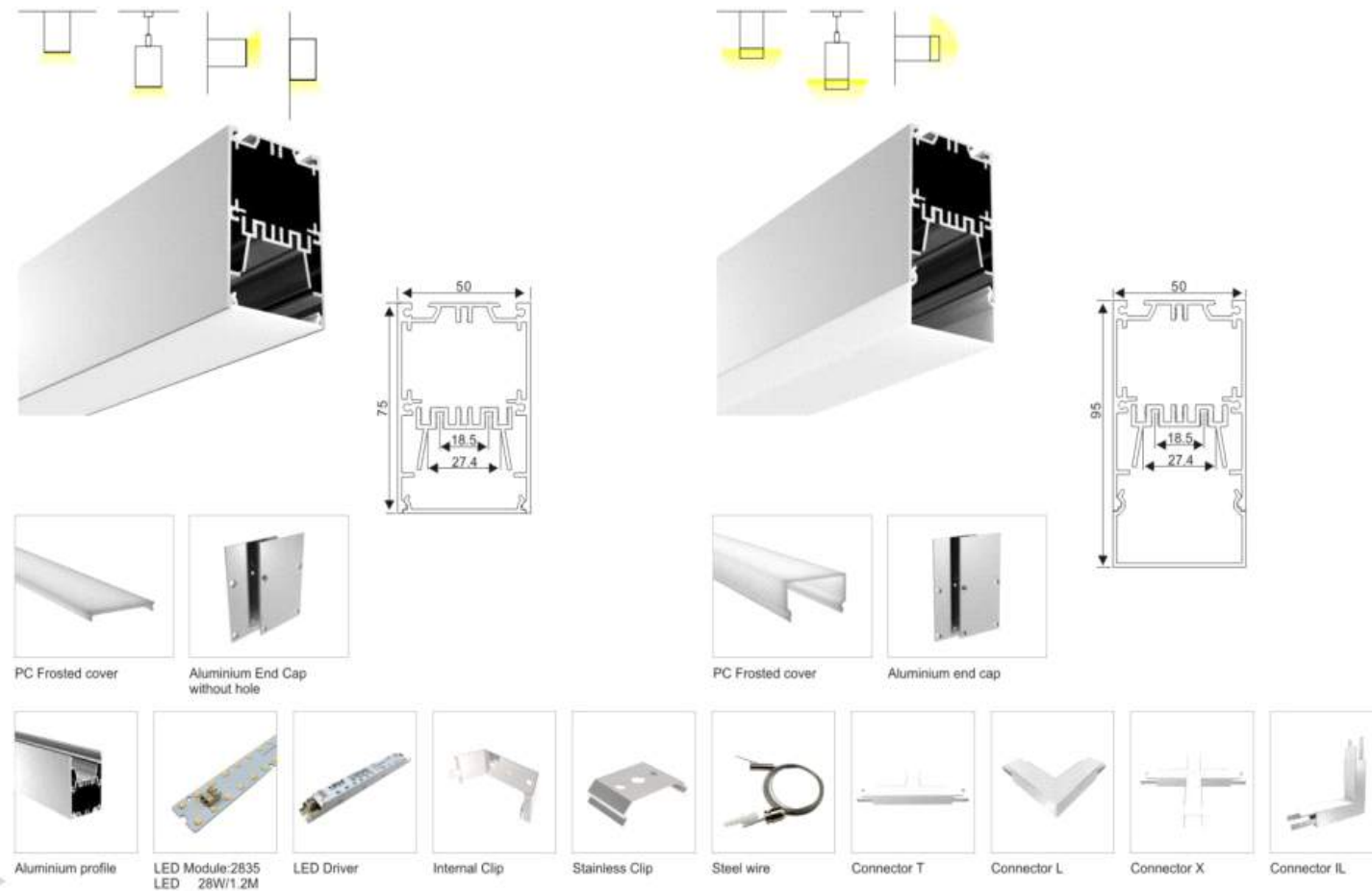


MODEL :LPMT38.1

MODEL :LPMT38.1A

INTEGRATED SUSPEND- SURFACE – WALL LED PROFILES

This group of aluminum LED profiles has been designed for Pendant /Suspend or Surface mount installation with integrated LED driver.



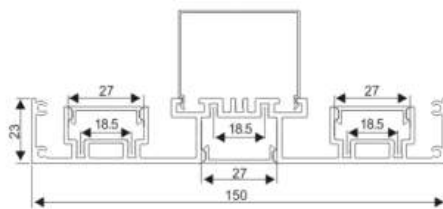
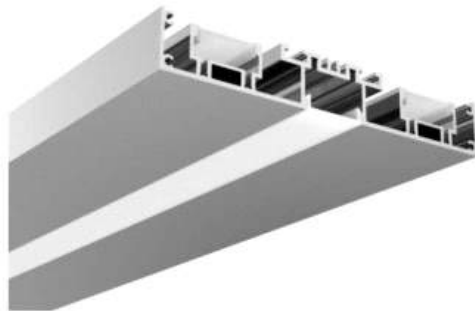
MODEL :LPIMT50

MODEL :LPIMT50A



PENDANT LED PROFILES

This group of aluminum LED profiles has been designed for Pendant /Suspend installation using Suspension Kits & mounting brackets.



Aluminium profile



PC Frosted cover


Aluminium End Cap
without hole


Aluminium cover for driver


LED Module:2835 LED
84W/1.2M

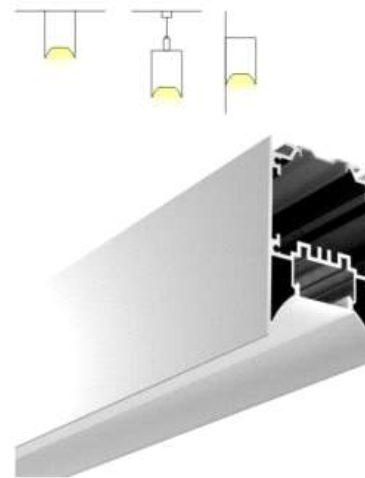

LED Driver



Steel wire



SUSPEND & SURFACE INDIRECT LED PROFILES



Aluminium profile



PMMA opal matte cover
PMMA semi-clear cover
PC diffused cover



Aluminium End Cap
without hole



Stainless Clip



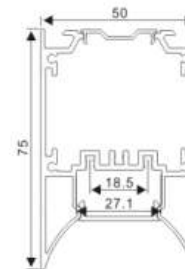
LED Module: 2835 LED
28W/1.2M



LED Driver

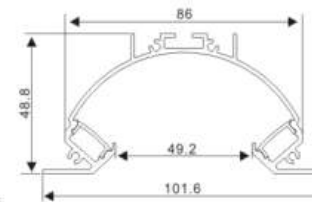


Steel wire



SUSPEND & SURFACE INDIRECT LED PROFILES

EXCELLENT COVE LIGHTING AVOIDING BULKHEADS



Aluminium profile



PMMA opal matte cover
PMMA semi-clear cover
PC diffused cover



LED strip: 5730 LED
60LEDs/M, 30W/M



LED Driver



Aluminium end cap



Spring Clip

QTT

Electronic switch (to be built in) IP00

FEATURES:

- Touch switch with automatic sensibility regulation
- Blue signaling led
- Works with constant voltage 12/24V max 2A
- Mounting with isolated bi-adhesive on aluminum profiles
- Type QTT1M with memory function in case of mains absence
- Type QTT1D on/off and dimming
- Type QTT1CT color temperature QTT1CT
- Soldering pads (optional cables)



OUTPUT	OUTPUT(W)		DIMENSION AXBXC
	MAX@24V	MAX@12V	
Vin-0,1V	2 A 48W	2A 24W	50 x 11,7 x 5..11
Vin-0,1V	2 A 48W	2A 24W	60 x 11,7 x 5..11
Vin-0,1V	2 A 48W	2A 24W	60 x 11,7 x 5..11
Vin-0,1V	2 A 48W	2A 24W	70 x 11,7 x 5..11

PIRSW for profiles

Motion detector (to be built in) IP00

FEATURES:

- PIR motion detector for aluminum profiles
- Detects movement at 2mt@110°
- Modular lens for fixing on flat profiles
- 40 seconds timer
- Operation in constant voltage 12/24V max6A
- Mounting with isolated bi-adhesive on aluminum profiles
- Soldering pads (optional cables)



OUTPUT	OUTPUT(W)		DIMENSION
	MAX@24V	MAX@12V	
Vin-0,1V	6A 144W	6A 72W	40 x 10 x 4